



**LEADING  
SINCE 1969**

# LEADER

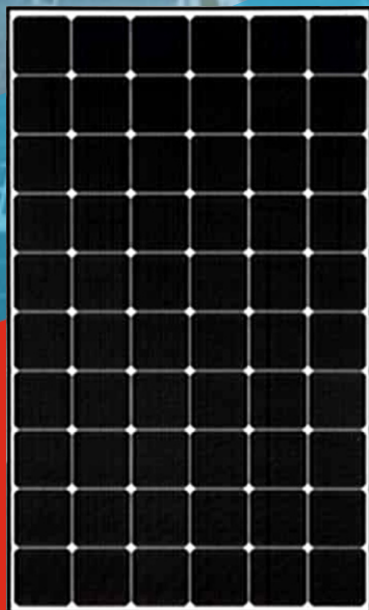
**ENERGY TO PERFORM**

*Eco-Friendly Solution  
for all your power needs*

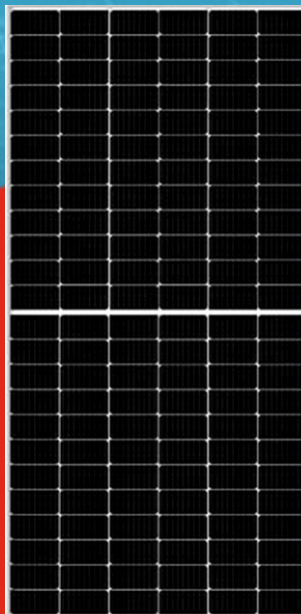
**SOLAR  
PANEL**



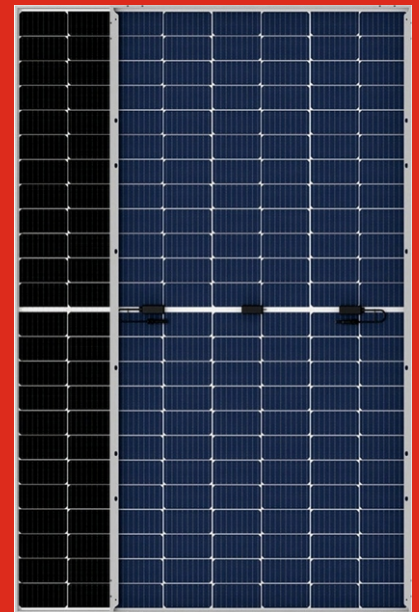
**POLYCRYSTALLINE**



**MONO PERC**



**MONO HALF CUT CELL**



**HALF CUT-BIFACIAL**

**INDIA'S LARGEST INTREGATED BATTERY MANUFACTURING FACILITIES**

# Salient Features

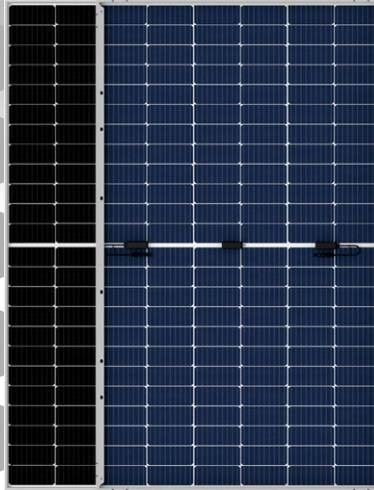
Ultra-high power generation

100% EL Inspection

Enhanced Reliability

Lower LID

High Compatibility



Optimized Temperature Coefficient

Lower Operating Temperature

Optimized Degradation

Outstanding Low Light Performance

Exceptional PID Resistance

## Application

All types of solar systems (On grid | Off grid | Hybrid | DC system)

- Domestic lighting systems • Street Lighting • Water pumping • Battery charging
- Community TV system • Microwave repeater station • Railway signaling and lighting systems
- Rural radio phones and exchanges • Offshore platforms • Desalination Plants
- Cathodic protection systems • Portable lantern • Power pack for village electrification
- Crop sprayer • Sign boards & glow signs

Certifications



## TECHNICAL SPECIFICATION

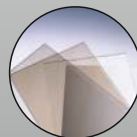
Module Type		Polycrystalline						MonoPerc	
Capacity		40Wp	50Wp	75Wp	100Wp	165Wp	335Wp	400Wp	440Wp
Module size	Length (±10mm)	430	540	775	1010	1490	1970	1970	2115
	Width (±10mm)	665	665	665	665	665	990	990	1050
	Height (mm)	34	34	34	34	35	35	35/40	35
Cells in Series		36	32/36	32/36	32/36	36	72	72	72X2
Mounting Hole Size oval Shape		7*10	7*10	7*10	7*10	8*12	9*14	9*14	9*14
Mounting Hole Pitch X axis in mm		637	637	637	637	630	945	945	945
Mounting Hole Pitch Y axis in mm		200	300	400	500	750	1175/1400	1175/1400	1175/1400
Diode Rating		6A	6A	6A	10A	15A	15A	15A	20A
Electrical Parameters	Pmax (VV)	40.00	50.00	75.00	100.00	165.00	335.00	400	440
	Vmpp (V)	17.00	17.54	17.54	18.00	18.4	37.7	41.5	41.50
	Imp (A)	2.36	2.85	4.28	5.66	8.70	8.9	9.65	10.62
	Voc (V)	21.00	20.64	20.64	22.20	22.5	46.5	49.1	48.80
	ISC (A)	2.55	3.14	4.70	6.00	9	9.26	10.25	11.56
Weight(KG)		3	4	6.5	7.75	10.6	22	22	24.40



Thick Iron Glass  
To cut down  
on solar wastage



Highly Efficient  
Generate power  
from sunshine  
to sunset without  
any fail



+Positive Power  
tolerance



25 years +  
long life Span



Able to withstand  
extreme & harsh  
weather condition

### CORPORATE OFFICE

SS -14 2nd Floor, Aditya Mega Mall  
CBD Ground, Shahdara, East Delhi  
110032

### INTERNATIONAL BUSINESS OFFICE

K No. 377, Second Floor, MG Road,  
New Delhi-110030

### MANUFACTURING UNIT

Plot No. 45-49, Sector-6, IIE, SIDCUL,  
Pantnagar, Rudrapur, Uttarakhand  
263153.

Phone: +91 9958594040 | Email: [ib@leaderbattery.com](mailto:ib@leaderbattery.com) | [www.leaderbattery.com](http://www.leaderbattery.com)